



ALLU CRUSHER **PRODUCT CATALOGUE.**



CRUSHER.

ALLU.NET

ALLU CRUSHER FEATURES & BENEFITS.

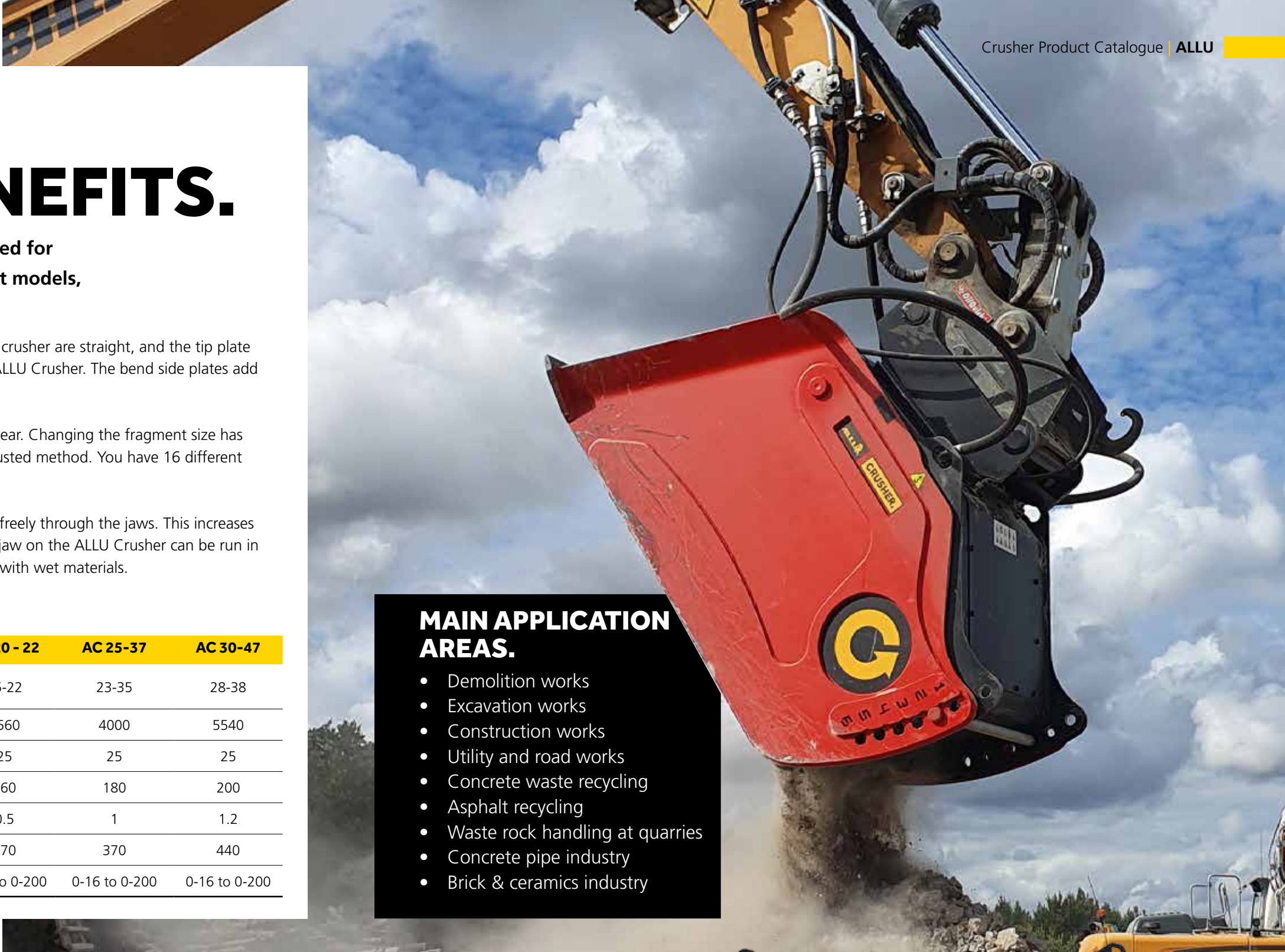


1. Main frame
2. Upper jaw
3. Crushing plates - top crushing plate; safe and easy
4. Streamline wear resistant frame - no external parts for long lasting operational life
5. Angled side and tip plate - provide a rigid frame, reduce the wear and provide a higher crushing filling rate
6. Pin adjustable and changeable fragment size - fastest in the field
7. Protected belt drive - maintenance free no adjustment

BENEFITS

- Higher excavator utilization rate
- Less material sent to landfills meaning less expenditure
- Reduce pollution through decreased transportation and fuel costs
- A mobile crusher that is easy to handle, even in tight and limited areas
- Quickly to put into operation
- No need for logistics or permissions
- Easy to change fragment size





ALLU CRUSHER

FEATURES & BENEFITS.

The ALLU Crusher is a series of crushing attachments designed for excavators from 10 to 35 tons. The series includes 4 different models, designed to crush a variety of materials directly on-site.

The ALLU Crusher is designed to be efficient in every situation. The sides of the crusher are straight, and the tip plate is angled. That makes it easier to fill with material and difficult to damage the ALLU Crusher. The bend side plates add overall strength to the bucket frame construction without adding weight.

The flywheel and belt drive are placed inside the unit to keep them safe from wear. Changing the fragment size has been made as easy as possible. It is changed easily and quickly with the pin adjusted method. You have 16 different fragment sizes available on all four models.

With the bottom eccentric jaw movement, you can expect the material to flow freely through the jaws. This increases the capacity of the material output, making it superior to the competition. The jaw on the ALLU Crusher can be run in both directions which helps to avoid jamming or bridging of the material, even with wet materials.

TECHNICAL SPECIFICATIONS.

| | AC 5-17FD | AC 8-15 | AC 10-16 | AC 20 - 22 | AC 25-37 | AC 30-47 |
|-----------------------------|-----------|---------------|---------------|---------------|---------------|---------------|
| Excavator size (t) | 4-6 | 8-11 | 10-14 | 15-22 | 23-35 | 28-38 |
| Weight (kg) | 1750 | 1400 | 1835 | 2560 | 4000 | 5540 |
| Operating Pressure (MPa) | 24 | 25 | 25 | 25 | 25 | 25 |
| Max. Operation Flow (Lmp) | 90 | 80 | 95 | 160 | 180 | 200 |
| Loading Capacity (m³) | 0,4 | 0.35 | 0.35 | 0.5 | 1 | 1.2 |
| Crushing Cam Opening (h) | 360 | 260 | 370 | 370 | 370 | 440 |
| Output Size Regulation (mm) | 0-75 | 0-16 to 0-200 | 0-16 to 0-200 | 0-16 to 0-200 | 0-16 to 0-200 | 0-16 to 0-200 |

MAIN APPLICATION AREAS.

- Demolition works
- Excavation works
- Construction works
- Utility and road works
- Concrete waste recycling
- Asphalt recycling
- Waste rock handling at quarries
- Concrete pipe industry
- Brick & ceramics industry



AC 8 - 15



AC 10 - 16



AC 20 - 22



AC 25 - 37



AC 30 - 47





ALLU SKID STEER CRUSHER

Thanks to the dynamics of the movement of our mobile jaw, this crusher model supports crushing in 2 directions, “forward” and “reverse”. Work in “forward” mode: it is suitable for dry material and larger pieces.

Work in “reverse” mode: you get better results on wet material and especially on asphalt, keeping the jaws clean of material that sticks to them.

The operator can easily choose the most suitable mode to grind and switch immediately if necessary.

The **change of granulometry** is fast, with a crushed material output range between 0 and 80 mm.

We have added a **new system of dampers**, thus achieving a very important acoustic reduction, as well as a lower vibration of the base machine.

The **direct drive** of the hydraulic motor reduces mechanisms and it is free of belts, and reducing the maintenance requirements.

The end result is a tireless crusher that offers you **much higher productions than expected** in this type of base machine.



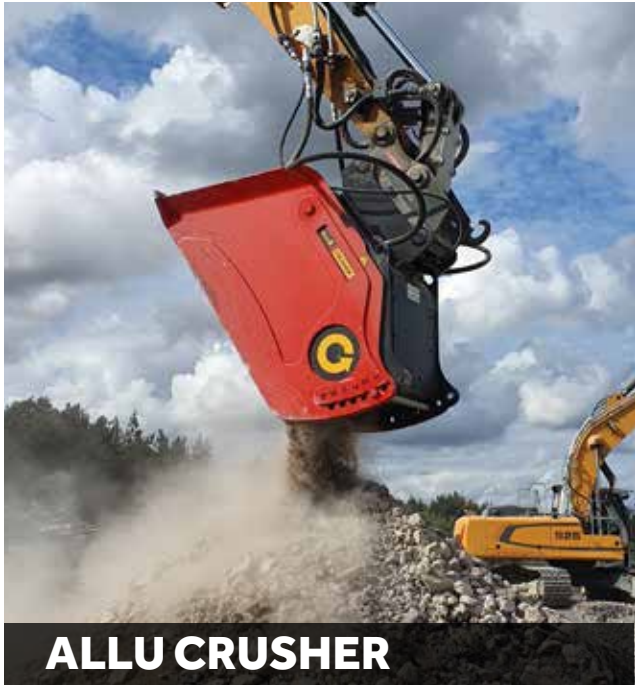
ALLU CRUSHER & ALLU TRANSFORMER.

The ALLU Transformer is a hydraulic attachment for wheel loader, excavator or skid steer. It screens, pulverizes, aerates, blends, mixes, separates, feeds and loads materials in a one step process. From topsoil, excavated soil and contaminated soil, to clay, peat, bark and compost, bio-waste, demolition waste, and construction waste, to milled asphalt, coal, oil shale, and limestone.




TRANSFORMING YOUR PROCESS. YOUR MACHINES AND YOUR EFFICIENCY.


The ALLU Crusher and ALLU Transformer support each other. Both functions are often needed at the same job site and are complimentary. By pre-screening the material with the ALLU Transformer the capacity of the ALLU Crusher will increase, as the fine material has been screened away. If the material is wet, fine material often tends to clog. This causes jamming and bridging. Furthermore, the quality of the desired end product will significantly improve. Re-use of pre-screened material; can be utilized as fill material.




BENEFITS OF USING THE ALLU TRANSFORMER AND ALLU CRUSHER AT THE SAME JOB SITE:




One base machine and operator needed




Low investment costs



Full mobile solutions to any job site



Process the fine materials first with the ALLU Transformer and hard materials with the ALLU Crusher - increasing the overall capacity



Less landfill payments - lower dumping costs

ALLU AROUND THE WORLD.

HEADQUARTERS

ALLU Finland Oy
Jokimäentie 1
16320 Pennala,
FINLAND
Tel: +358 3 882 140
Email: info@allu.net

CHINA

Factory No.4, No.639
Yide road, Zhangpu Town,
Kunshan City, Jiangsu
Province, P.R. of CHINA / 江苏
省昆山市张浦镇益德路639号
4号房
Tel: +86 21 5888 5836
Email: info@allu.net

GERMANY

ALLU Deutschland GmbH
Maschweg 77
DE-49324 Melle,
GERMANY
Tel: +49 (0) 5422 / 92782 - 0 (Zentrale)
Email: info@allu.net

NORTH AMERICA

ALLU Group Inc
7134 Cockrill Bend Blvd.
Nashville, TN 37209,
USA
Toll Free: 800-939-ALLU (2558)
Tel: +1 (732) 698-7205
Email: info@allu.net

SWEDEN

ALLU Sverige AB
Stenvretsgatan 1,
SE-749 40 Enköping,
SWEDEN
Tel: +46 (0)171-17 15 17
Email: info@allu.net



ALLU.NET



© ALLU 2024 All Right Reserved.

